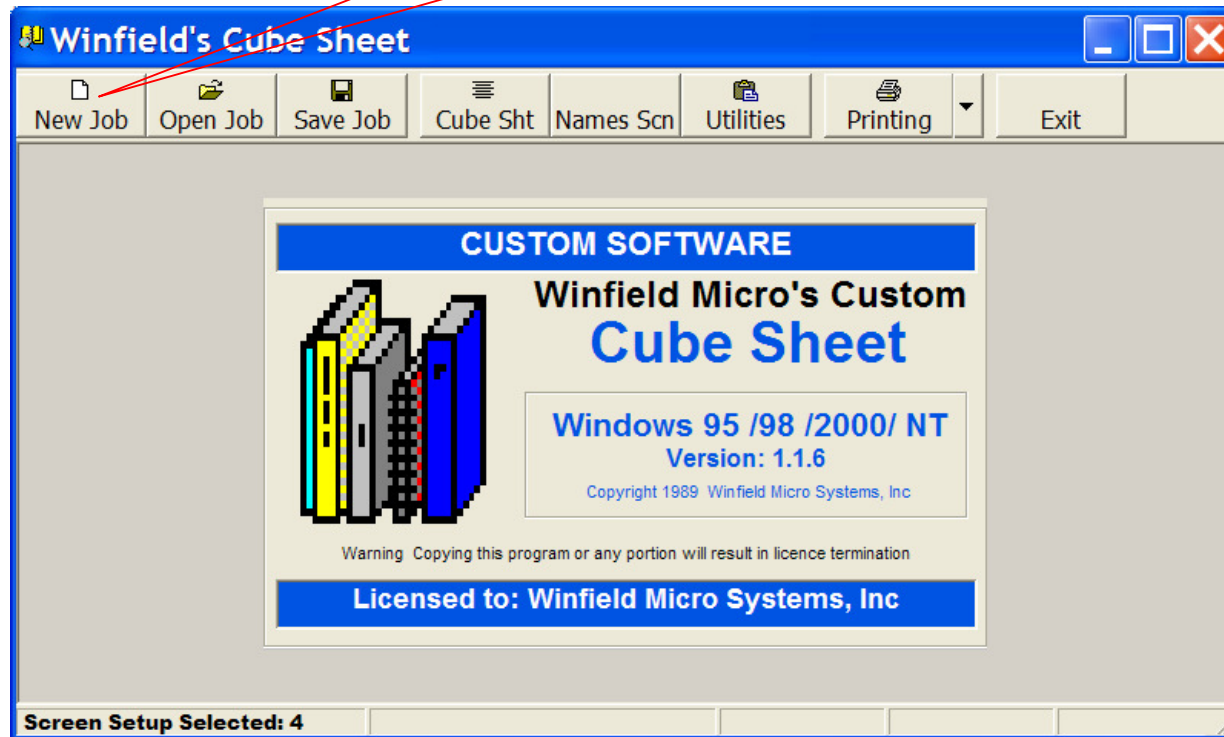


“Cube Sheet Item” Edit Function

Click Here



You will be prompted to save your existing cube sheet first (only if you have an active job open).

Note – Your “Room List” of all items selected/assigned. **DOUBLE CLICK** any item to “Edit Name/Cube/Quantity”. See the next page for the “Edit Function”.

New Job Open Job Save Job Cube Sht Names Sch Utilities Printing Exit							
Toggle NotMvg On	Room - ZOOM	Category - ZOOM	Item List - ZOOM		Room Cube List - ZOOM		
	Attic	Appliances	Basinette	5	1	Basket (Clothes)	5
PBO List	Backyard	Attic	Bed, Bunk (set of 2)	70	2	Bathinette	5
CP List	Barn	Bar	Bed, Bunk Ladder	2	1	Bed, Bunk (set of 2)	70
	Basement	Barn	Bed, Day	30	1	Bed, Day	30
Add Custom Item	Bathroom-Guest	Basement	Bed, Footboard	5	1	Bed, Headboard	10
Find Item	Bathroom-Main	Bathroom	Bed, Full/DbL	60	1	Bed, Rollaway	20
Rename Current Rm	Bathroom-Master	BBQ Grill	Bed, Headboard	10			
Room Notes	Bathroom-Powder	Bedroom	Bed, King Size	70			
	Bedroom-#1	Beds	Bed, Metal Frame	5			
Show PBO/CP	Bedroom-#2	Benches	Bed, Queen	65			
Show NotMvg	Bedroom-#3	Bulky Items	Bed, Rollaway	20			
Quick View	Bedroom-#4	Cabinets	Bed, Sngl/Holywd	40			
	Bedroom-#5	Carton-CP	Bed, Water	10			
	Bedroom-Guest	Carton-PBO	Bed, Waterbed Bas	10			
	Bedroom-Master	Chairs	Bed, Youth	30			
	Bedroom-Nursery	Chest	Canopy Frame	2			
	Breakfast Room	Couches/Sofa	Cot, Folding	10			
	Bulky Items	Crates	Crib, Baby	10			
			Crib, Portable	6			

Shipper: Untitled Room: Bathroom-Guest Items: 7 Cubes: 145 Weight: 1015

Note – Your “Room List” of all items selected/assigned. **DOUBLE CLICK** any item to “Edit Name/Cube/Quantity”.

Room - ZOOM	Category - ZOOM	Item List - ZOOM	Room Cube List - ZOOM
		5	1 Basket (Clothes) 5
		70	2 Bathinette 5
		2	1 Bed, Bunk (set of 2) 70
		30	1 Bed, Day 30
		5	1 Bed, Headboard 10
		60	1 Bed, Rollaway 20
		10	
		70	
		5	
		65	
		20	
		40	
		10	
		10	
Bedroom-Master	Chairs	Bed, Youth	30
Bedroom-Nursery	Chest	Canopy Frame	2
Breakfast Room	Couches/Sofa	Cot, Folding	10
Bulky Items	Crates	Crib, Baby	10
		Crib, Portable	6

Edit Item

Description:

Items Moving:
 <-Decrease
 <-Increase

Items NOT Moving:
 <-Decrease
 <-Increase

Item Cube: Weight:

Shipper: **Untitled** Room: **Bathroom-Guest** Items: **7** Cubes: **145** Weight: **1015**

This “Edit Item” is a helpful aid. You may Change the Description, Items Moving, Not Moving, Cube and/or the Room that the item is assigned to.